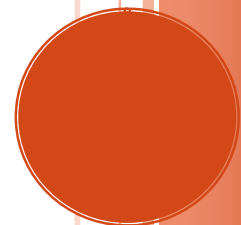


# PROJECT BOARD

## INSTALLATION MANUAL

This manual will teach you, step by step, how to install our solution –easily and with a few clicks.

4WorkGroup



## Contenido

I. Purpose .....	2
II. Installation requirements.....	2
A. Web Server.....	2
B. Database Server .....	2
C. Web Browser.....	2
III. Installation package.....	2
A. Database Scripts.....	2
B. Application Scripts.....	2
IV. Installing ProjectBoard.....	4

## Listado de imágenes

Figure 1: Assign permissions to folders .....	3
Figure 2: Screenshot of script in the Web.Config file.....	4
Figure 3: Database connection string encryption dialog.....	5
Figure 4: Opening the virtual directory dialog.....	6
Figure 5: Virtual directory permission allocation dialog. ....	7
Figure 6: ProjectBoard authentication page.....	7

# INSTALLATION MANUAL

## I. Purpose

The purpose of this manual is to teach you how easy it is to install ProjectBoard.

## II. Installation requirements

### A. Web Server

Microsoft© Windows 2000, Server 2003 or XP Professional  
Internet Information Server 5+  
Microsoft© .NET Framework v1.1

### B. Database Server

Microsoft© SQL Server 7, Microsoft© SQL Server 2000 or Microsoft© SQL Server 2005

### C. Web Browser

Internet Explorer 5.0+, Mozilla 1.0+, Netscape 4.7+ or Firefox 1.0+  
JavaScript -cookies must be enabled.

## III. Installation package

### A. Database Scripts

Tables.sql  
Stored procedures.sql  
Data.sql

### B. Application Scripts

These files contain all application scripts. Special attention should be given to the following files:

1. web.config
2. license.xml
3. xml/UploadFolders.xml

#### 1. Web.config

Use this file to configure:

- Application name.
- Connection to the database server
- SMTP server
- Maximum number of users supported by the system

- Number of projects supported by the system

## 2. License.xml

This file contains the valid license for the ProjectBoard to work in your server, which shall be provided by 4Workgroup upon purchase.

## 3. XML/UploadFolders

In this file, you have to specify the physical paths of two folders that will be used as repository of all ProjectBoard files.

The default paths and folders are:

C:\inetpub\wwwroot\

C:\inetpub\wwwroot\

These paths and folders may be other than that containing the application. If so, you should grant reading/writing permissions to user ASP.NET (Windows XP) or NETWORK SERVICE (Windows 2003).

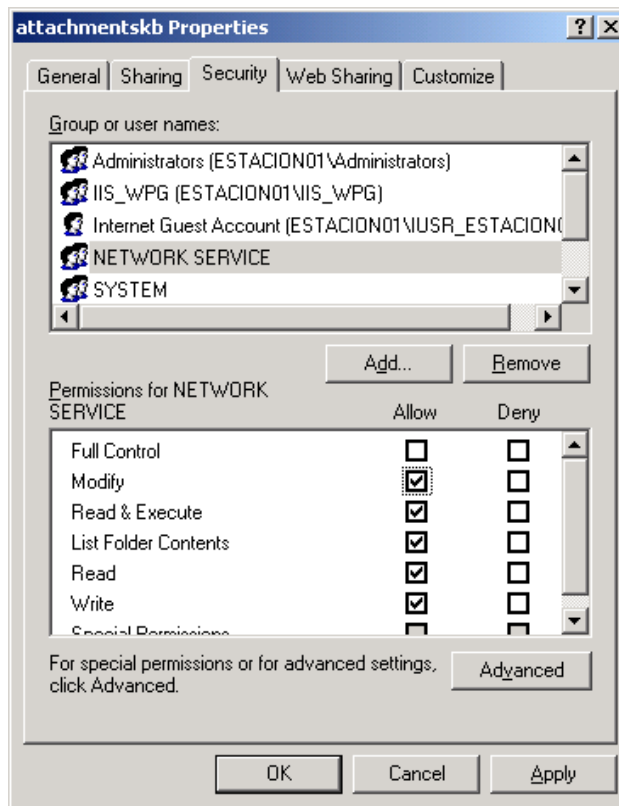


Figure 1: Assign permissions to folders

## Encryption files

This executable file will encrypt the database connection string.

Below are instructions on how to use it.

## IV. Installing ProjectBoard

Follow these steps to install ProjectBoard:

1. Unzip all files in the Installation Package
2. Log on to your Database Server and create a database with any name of your choice.
3. Load the scripts to your database. They should load in the following order:

First	→	Tables.sql
Second	→	Stores procedures.sql
Third	→	Data.sql

After every script load step check for correct creation of tables to be used by the program, stored procedures and basic data needed for proper functioning of ProjectBoard.

4. Place all ProjectBoard files in a virtual directory in the Web Application Server
5. Open the “Web.config” configuration file to set the values of the configuration parameters as detailed below.

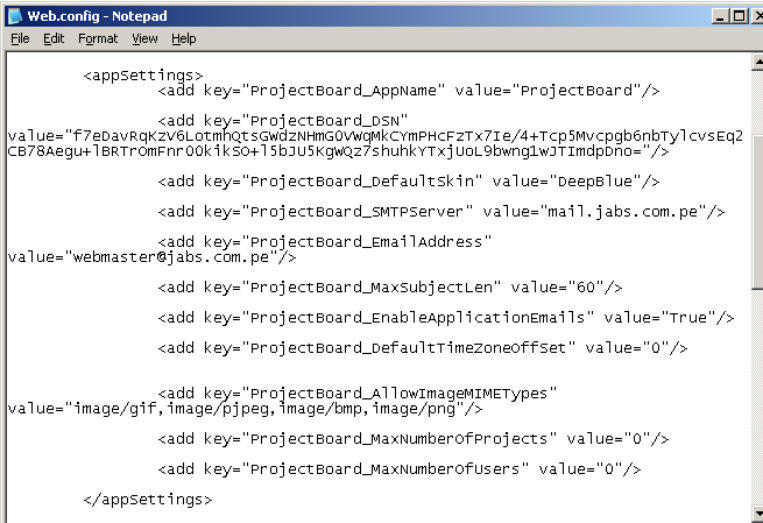
**Note:** Use the **notepad** to open this file.

Once you have opened this file, look for the tags within the block `<appSettings> ... </appSettings>`. Here you will see tags with the following structure:

`<add key="key name" value="key value" />`

Now you only have to enter values according to the intended configuration.

The figure below shows a script block contained in the web.config file, which you have to change.



```

<appSettings>
  <add key="ProjectBoard_AppName" value="ProjectBoard"/>
  <add key="ProjectBoard_DSN"
value="f7eBavRqkZv6LotmhQtsgwdzNHmG0VwqMkCymPHCFzTx7Ie/4+TcP5Mvcpgb6nbTy1cvSEq2
CB78Aegu+1BRtromFnr00k1kSO+15bJU5kgwQz7shuhkYTxjUoL9bwng1wJTImdpDno="/>
  <add key="ProjectBoard_DefaultSkin" value="DeepBlue"/>
  <add key="ProjectBoard_SMTPServer" value="mail.jabs.com.pe"/>
  <add key="ProjectBoard_EmailAddress"
value="webmaster@jabs.com.pe"/>
  <add key="ProjectBoard_MaxSubjectLen" value="60"/>
  <add key="ProjectBoard_EnableApplicationEmails" value="True"/>
  <add key="ProjectBoard_DefaultTimeZoneOffset" value="0"/>
  <add key="ProjectBoard_AllowImageMIMETypes"
value="image/gif, image/jpeg, image/bmp, image/png"/>
  <add key="ProjectBoard_MaxNumberOfProjects" value="0"/>
  <add key="ProjectBoard_MaxNumberOfUsers" value="0"/>
</appSettings>

```

Figure 2: Screenshot of script in the Web.Config file

## a. Application name

```
<add key="ProjectBoard_AppName" value="ProjectBoard"/>
```

Change the value of this tag to change the application name. For example, you may name it "JABS Projects".

## b. Connection to the database server

```
<add key="ProjectBoard_DSN"
value="f7eDavRqKzV6LotmhQtsGWdzNHmG0VWqMkCYmPHcFzTx7Ie/4+TcP5MvcpG
b6nbTylcvsEq2CB78Aegu+IBRTrOmFnr00kikSO+I5bJU5KgWQz7shuhkYTxjUoL9bwng1
wJTlmdpDno="/>
```

You have to set this value with that of your database server connection, but the value should be encrypted for increased security.

To get the encrypted connection string, use the encryption program included in the installation package: enter the values for the appropriate database server connection fields, and then run the program to get the encrypted string.

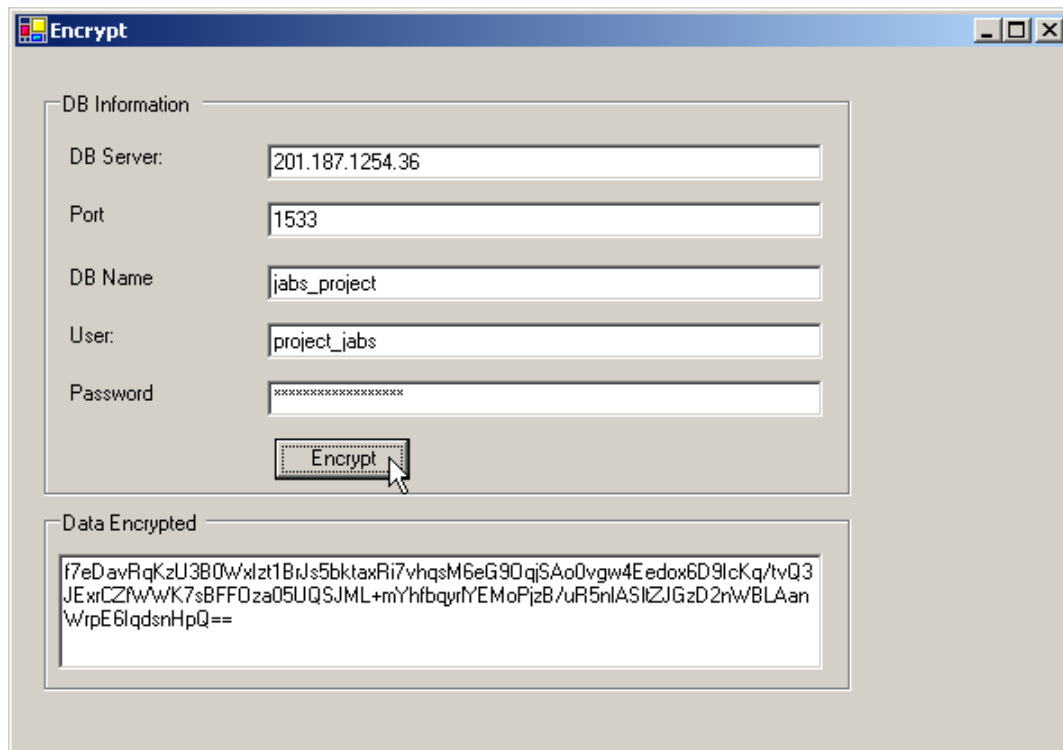


Figure 3: Database connection string encryption dialog

By so doing you will get the encrypted connection string value and replace that value in the web.config file.

## c. SMTP Server

```
<add key="ProjectBoard_SMTPServer" value="webmail.jabs.com.pe"/>
```

Here you can enter the SMTP Server address to enable the system to send email.

d. Email account

```
<add key="ProjectBoard_EmailAddress" value="webmaster@jabs.com.pe"/>
```

Here you can set the default email account that will be used to send email from the system.

## 6. License installation

As you purchase ProjectBoard, you have to ask 4WorkGroup technical service for appropriate support and they will submit the license so that ProjectBoard can work on the web domain of your choice.

The "web.config" configuration file and the "license.xml" licensing file are reloaded in the application server, each in its appropriate folder.

Once you are done with the above steps, open the Internet Information Services (IIS) and configure the folder containing the application files as a Virtual Directory. Look at the following screenshots:

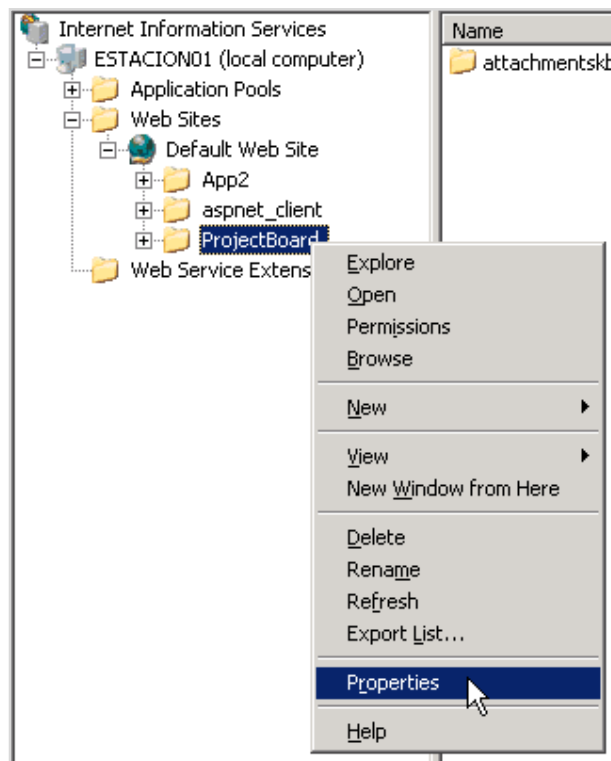


Figure 4: Opening the virtual directory dialog.

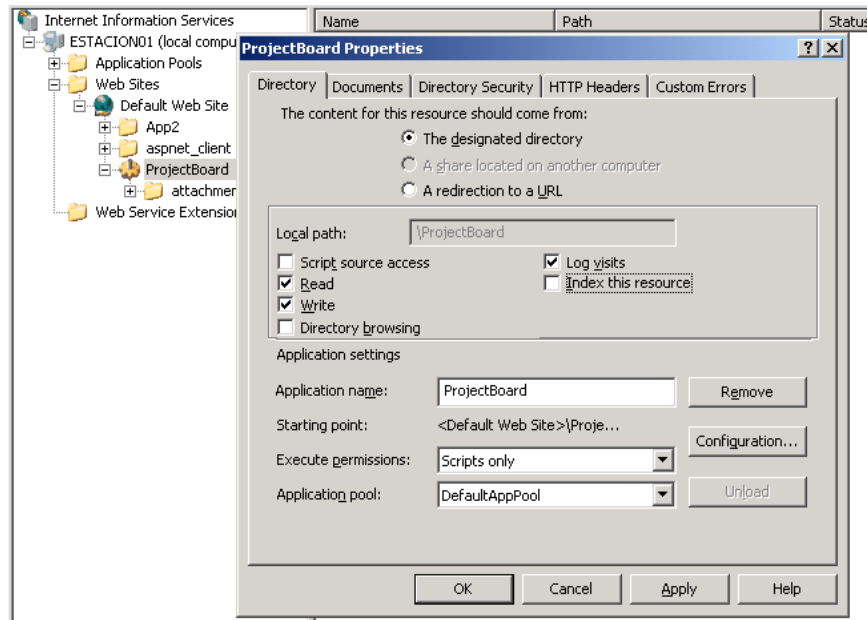


Figure 5: Virtual directory permission allocation dialog.

Next, you will have to grant reading/writing permissions to the ASP.NET user (Windows XP) or NETWORK SERVICE (Windows 2003) in the following folders:

- Avatars
- ChatTempFiles
- Files y projects

Finally, you will have to log on to your application with a web browser by entering the URL where your application is found.

For example, the URL of the demo ProjectBoard project is:

[http://www.4wg.net/projectboard\\_demo](http://www.4wg.net/projectboard_demo)

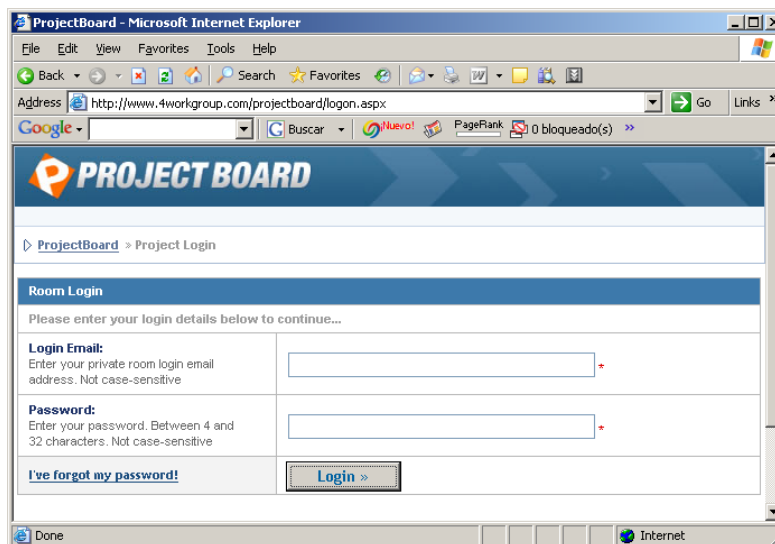


Figure 6: ProjectBoard authentication page

The default system administration account is:

Login Email : [admin@admin.com](mailto:admin@admin.com)

Password : admin

One of the first things you have to do is enter and change both Login Email and Password as a security measure.

Check the administration manual for more details on this.